

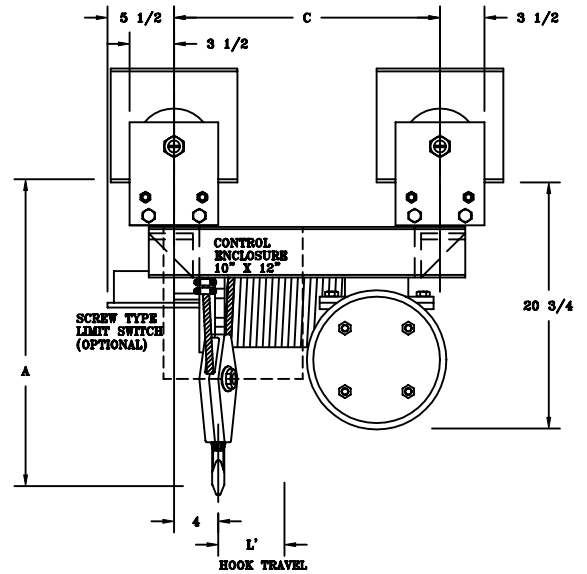
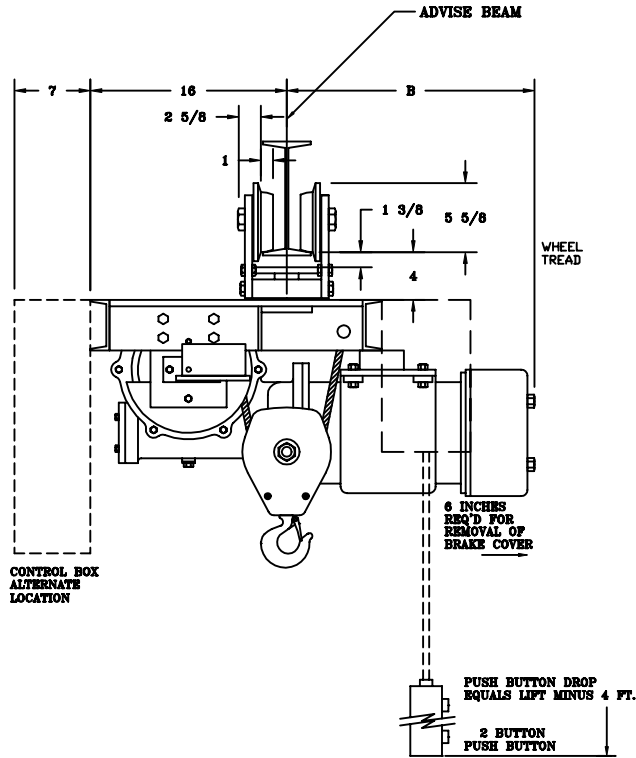
CHESTER HOIST

WORM DRIVE HOIST
DATA SHEET E-6AS

CAPACITY 1-1 1/2 TON

STANDARD HEADROOM
PLAIN TROLLEY TYPE - R

SINGLE HOOK MONORAIL
2-PART SINGLE



ALL DIMENSIONS IN INCHES

| MODEL NUMBER | CAPACITY (lbs.) | SPEED (fpm) | LIFT (ft.) | REEVING | MOTOR (hp) | A | B | C | L' | ST'D. I-BEAM | | MIN. CURVE RADIUS (ft.) | APPROX. WT. (lbs.) |
|--------------|-----------------|-------------|------------|----------|------------|----|--------|--------|-------|--------------|--------|-------------------------|--------------------|
| | | | | | | | | | | SIZE | CLEAR* | | |
| WDT-127S | 2000 | 20 | 24 | 2PS-1/4 | 2 @ 1200 | 22 | 20 1/2 | 21 1/2 | 4 1/4 | 7-24 | 7/16 | 3 | 585 |
| WDT-128S | 2000 | 20 | 45 | 2PS-1/4 | 2 @ 1200 | 22 | 20 1/2 | 28 | 7 1/2 | 7-24 | 7/16 | 3 | 635 |
| WDT-129S | 2000 | 20 | 66 | 2PS-1/4 | 2 @ 1200 | 22 | 20 1/2 | 34 1/2 | 11 | 7-24 | 7/16 | 3 | 685 |
| WDT-129BS | 2000 | 20 | 98 | 2PS-1/4 | 2 @ 1200 | 22 | 20 1/2 | 44 1/2 | 16 | 7-24 | 7/16 | 3 | 765 |
| WDT-120S | 2000 | 30 | 24 | 2PS-1/4 | 3 @ 1800 | 22 | 20 1/2 | 21 1/2 | 4 1/4 | 7-24 | 7/16 | 3 | 585 |
| WDT-121S | 2000 | 30 | 45 | 2PS-1/4 | 3 @ 1800 | 22 | 20 1/2 | 28 | 7 1/2 | 7-24 | 7/16 | 3 | 635 |
| WDT-122S | 2000 | 30 | 66 | 2PS-1/4 | 3 @ 1800 | 22 | 20 1/2 | 34 1/2 | 11 | 7-24 | 7/16 | 3 | 685 |
| WDT-122BS | 2000 | 30 | 98 | 2PS-1/4 | 3 @ 1800 | 22 | 20 1/2 | 44 1/2 | 16 | 7-24 | 7/16 | 3 | 765 |
| WDT-123S | 2000 | 40 | 24 | 2PS-1/4 | 4 @ 1800 | 22 | 20 1/2 | 21 1/2 | 4 1/4 | 7-24 | 7/16 | 3 | 585 |
| WDT-124S | 2000 | 40 | 45 | 2PS-1/4 | 4 @ 1800 | 22 | 20 1/2 | 28 | 7 1/2 | 7-24 | 7/16 | 3 | 635 |
| WDT-125S | 2000 | 40 | 66 | 2PS-1/4 | 4 @ 1800 | 22 | 20 1/2 | 34 1/2 | 11 | 7-24 | 7/16 | 3 | 685 |
| WDT-125BS | 2000 | 40 | 98 | 2PS-1/4 | 4 @ 1800 | 22 | 20 1/2 | 44 1/2 | 16 | 7-24 | 7/16 | 3 | 765 |
| WDT-130S | 3000 | 20 | 18 | 2PS-5/16 | 3 @ 1200 | 24 | 20 1/2 | 21 1/2 | 4 1/4 | 7-24 | 7/16 | 3 | 585 |
| WDT-131S | 3000 | 20 | 35 | 2PS-5/16 | 3 @ 1200 | 24 | 20 1/2 | 28 | 7 1/2 | 7-24 | 7/16 | 3 | 635 |
| WDT-132S | 3000 | 20 | 52 | 2PS-5/16 | 3 @ 1200 | 24 | 20 1/2 | 34 1/2 | 11 | 7-24 | 7/16 | 3 | 685 |
| WDT-133S | 3000 | 30 | 18 | 2PS-5/16 | 5 @ 1800 | 24 | 20 1/2 | 21 1/2 | 4 1/4 | 7-24 | 7/16 | 3 | 585 |
| WDT-134S | 3000 | 30 | 35 | 2PS-5/16 | 5 @ 1800 | 24 | 20 1/2 | 28 | 7 1/2 | 7-24 | 7/16 | 3 | 635 |
| WDT-135S | 3000 | 30 | 52 | 2PS-5/16 | 5 @ 1800 | 24 | 20 1/2 | 34 1/2 | 11 | 7-24 | 7/16 | 3 | 685 |
| WDT-136S | 3000 | 40 | 18 | 2PS-5/16 | 6 @ 1800 | 24 | 23 1/2 | 21 1/2 | 4 1/4 | 7-24 | 7/16 | 3 | 610 |
| WDT-137S | 3000 | 40 | 35 | 2PS-5/16 | 6 @ 1800 | 24 | 23 1/2 | 28 | 7 1/2 | 7-24 | 7/16 | 3 | 660 |
| WDT-138S | 3000 | 40 | 52 | 2PS-5/16 | 6 @ 1800 | 24 | 23 1/2 | 34 1/2 | 11 | 7-24 | 7/16 | 3 | 710 |

* CLEARANCE BASED ON MAX. "S" BEAM SIZE 24" @ 121 LBS.
TROLLEYS FOR OTHER I-BEAMS AND PATENTED TRACKS ARE AVAILABLE.
NOTE: WHEN USING SCREW TYPE LIMIT SWITCH ADD 1 INCH TO HEADROOM.